

# Lastolite

Professional



Backgrounds and Lighting Control Systems

[www.lastolite.com](http://www.lastolite.com)



# Lastolite

## Professional

## About the company

Lastolite was founded 21 years ago and has developed from a company that manufactured the original reflecting panel into a company that now offers a very extensive portfolio of market leading products. To maintain our leading edge we make significant investments into research and development. This ensures that we can continue to launch new innovative products to meet the needs of the ever changing photo and video markets. This brochure features more new products than ever before. There are a number of developments and additions to our existing portfolio as well as some major new concept products.

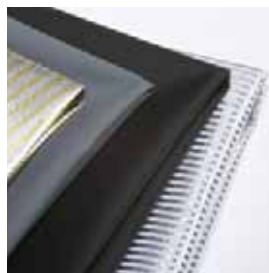
Lastolite's textile based products are all produced within our own manufacturing plants. Our strict quality standards enable us to deliver a world class product manufactured to the highest quality, ensuring it can withstand the repeated daily use of the most demanding user. This attention to detail and our commitment to deliver ground breaking products to the photo and video markets has lead to the Lastolite brand being sold in more than forty countries world wide.



Three stitch lines



Two stitch line plus an upgraded zip



High performance fabrics

Our research and development team are continually looking at ways to further improve the way our products are manufactured. An example of this would be the rim tape we use on many of our products. It is now even stronger making the products using this tape even more durable. We have also introduced a triple stitch line on most of our products as opposed to using just one. This again adds strength and ensures the product will last for many years. Our reflective fabrics also continue to be developed to the highest specification not only for their reflective properties but also their construction which prevents cracking of the film and potential delamination. Finally to support these product improvements we have also developed a much more durable fabric for all the carry cases our products are supplied in. A high grade zip and multiple stitch lines construction ensure they will last as long as our products.

## Index

TriGrip	p2
TriGrip Handle TriFlips 8:1	p3
Collapsible Reflectors	p4
Bottletops 5:1 Accessories	p5
Skylite	p6
Ezyview	p7
EzyBalance TriBalance XpoBalance	p8
Lumen8	p10
Lumen8 Kits	p11
RayD8 c3200 RayD8 c5000	p12
Ezybox	p13
Ezybox Hotshoe Micro Apollo	p14
Trireflector MkII	p15
Umbrellas	p16
Umbrella Box	p17
Cubelite™	p18
Cubelite™ Kits Cubelite™ Travel Kits	p19
Cubelite™ Light Table	p20
LiteTable	p21
Studio Cubelite	p22
ePhotomaker Light Tents	p23
Dyed Background Swatches	p24
Dyed Curtain / Muslin Backgrounds	p25
Dyed Collapsible Reversible Backgrounds	p26
Plain Background Swatches Plain Collapsible Knitted Backgrounds	p27
HiLite Backgrounds	p28
Superwhite Vinyl Backgrounds	p29
Paper Roll Backgrounds	p30
Chromakey Collapsible Reversibles Chromakey Curtain / Muslin Backgrounds	p31
Background Support Systems Props	P32

### TriGrip

The expanded range of TriGrip reflectors now come with a new moulded handle with securing strap, allowing even more accurate positioning of the reflector with one hand.

This means that light can be directed to all those awkward spots e.g. under the chin and eyes without the need for stands or supports.



Close up without Tri-grips



Close up with Tri-grips

TriGrip designed by Gary Astill. A registered design.

#### New introductions to the TriGrip range:

- A new 'mini' size 45cm (18") – ideal for smaller objects or where a small area of fill in light is required. The mini TriGrips fold down neatly into a case measuring only 20cm in diameter, making them ideal to slip into your camera bag.
- A new surface:
  - Black** - Made from light absorbing velvet to accentuate shadows and create 'mood'. Also ideal for blocking an over bright sun.

#### Features

- ▶ Hold the reflector with just one hand
- ▶ Hold 2 reflectors, one in each hand
- ▶ New moulded handle with strap
- ▶ Allows accurate positioning
- ▶ Double sided
- ▶ Perfect for location work, as no stand is necessary
- ▶ Collapses to a third of its original size



#### Specifications

Mini TriGrip	Size	Code	TriGrip	Size	Code	Large TriGrip	Size	Code
Silver / White	45cm (18")	3531	Silver / White	75cm (30")	3631	Silver / White	1.2m (4')	3731
Gold / White	45cm (18")	3541	Gold / White	75cm (30")	3641	Gold / White	1.2m (4')	3741
Sunfire / Silver	45cm (18")	3536	Sunfire / Silver	75cm (30")	3636	Sunfire / Silver	1.2m (4')	3736
Sunlite / SoftSilver	45cm (18")	3528	Sunlite / SoftSilver	75cm (30")	3628	Sunlite / SoftSilver	1.2m (4')	3728
Diffuser, 1 Stop	45cm (18")	3551	Diffuser, 1 Stop	75cm (30")	3651	Diffuser, 1 Stop	1.2m (4')	3751
Diffuser, 2 Stops	45cm (18")	3507	Diffuser, 2 Stops	75cm (30")	3607	Diffuser, 2 Stops	1.2m (4')	3707
Collapses to 20cm (8")			Black	75cm (30")	3622	Collapses to 51cm (20")		
			Collapses to 30cm (12")					

# TriGrip Handle

The new moulded Tri Grip handle allows for even greater control when positioning the reflector. The Velcro fastening straps provide a more secure grip even in the most demanding conditions. The securing straps also allow you to support the reflector without actually gripping the handle, reducing the pressure on your wrist and fingers when held for prolonged periods.



The TriGrip can also rest comfortably against the knee leaving your hands free to operate the camera

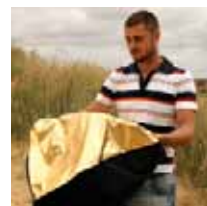
# TriFlips 8:1

Never get caught out again, up to 8 surfaces in the same bag. The TriFlips are designed to increase the versatility of the TriGrip reflector. Simply insert the TriGrip into the TriFlip sleeve for instant access.



### Features

- ▶ Set up in seconds
- ▶ Reversible
- ▶ Seven surfaces
- ▶ Taut professional finish



### Specifications

Tri Flips	Size	Code	TriFlip 8:1 Kits	Size	Code
TriFlips (sleeves with 7 reflective surfaces)	75cm (30")	3698	2 stop TriGrip diffuser with TriFlip sleeves	75cm (30")	3696
Mini TriFlips (sleeves with 7 reflective surfaces)	45cm (18")	3598	2 stop Mini TriGrip diffuser with TriFlip sleeves	45cm (18")	3596
			TriBalance with TriFlip sleeves	75cm (30")	3697

### Collapsible Reflectors

Lastolite, the original manufacturer of collapsible reflectors, continues to improve the quality and variety of its reflector range.

As well as the the lifetime guarantee on reflector steel, Lastolite has also upgraded the rim tape to create a stronger, longer lasting reflector.



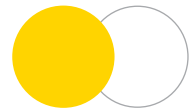
#### Features

- ▶ Collapsible / Reversible
- ▶ Lifetime rim guarantee
- ▶ Upgraded rim tape
- ▶ Six useful sizes
- ▶ Six essential colours
- ▶ Double-coated reflective surfaces
- ▶ Collapses to a third of its original size



**White** 5600°K    **SoftSilver** 5600°K    **Silver** 5600°K    **Sunlite** 5000°K    **Sunfire** 4750°K    **Gold** 3800°K

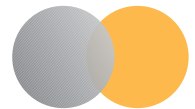
Sunfire / White



Silver / White



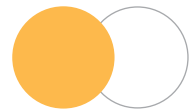
Silver / Gold



Sunfire / Silver



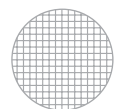
Gold / White



Sunlite / Soft Silver  
New Colour!



Diffuser, 2 Stops



#### Specifications

Collapsible Reflectors						
Open Sizes	30cm (12")	50cm (20")	76cm (30")	95cm (38")	120cm (48")	1.8 x 1.2m (6' x 4')
Collapsed Sizes	14cm (5.5")	24cm (9")	30cm (12")	40cm (16")	48cm (19")	64cm (25")
	CODE	CODE	CODE	CODE	CODE	CODE
Sunfire / White	1206	2006	3006	3806	4806	7206
Silver / White	1231	2031	3031	3831	4831	7231
Silver / Gold	1234	2034	3034	3834	-	-
Sunfire / Silver	1236	2036	3036	3836	4836	7236
Gold / White	1241	2041	3041	3841	4841	7241
Sunlite / Soft Silver	1228	2028	3028	3828	4828	7228
Diffuser, 2 Stops	-	2007	3007	3807	4807	7207

# Bottletops 5:1

An innovation of Lastolite's renowned range of reflectors.

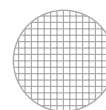
Simply slip the elasticated Gold / White or Sunfire / Silver cover over the reflector or diffuser to produce an instant change of colour.



## Features

- ▶ Sets up in seconds
- ▶ No extra weight
- ▶ Collapses to a third of its original size
- ▶ Five surfaces in one bag
- ▶ Taut professional finish

Diffuser Panel



Gold / White Cover



Sunlite / Soft Silver Cover



## Specifications

Bottletop Accessories	Size	Code
Diffuser with Gold / White & Sunfire / Silver cover	50cm (20")	2096
Diffuser with Gold / White & Sunfire / Silver cover	75cm (30")	3096
Diffuser with Gold / White & Sunfire / Silver cover	95cm (38")	3896
Diffuser with Gold / White & Sunfire / Silver cover	1.2m (48")	4896

# Accessories

Suitable for all reflectors and bottletops, the following accessories allow for versatile positioning:



1100  
Universal  
Bracket



1104  
Diffuser  
Bracket



1113  
Reflector  
Bracket



1107  
Panelight  
Bracket

## Features

- ▶ Wind resistant clips for outdoor use
- ▶ 1113 clamps to tripod legs and tables
- ▶ 1107, 1100 & 1104 all adjustable in size

## Specifications

Reflector Accessories	Size	Code
Universal Bracket	50cm - 120cm (20" - 48")	1100
Reflector Bracket - flexible to fit any shape	30cm (12")	1113
Diffuser Bracket	50cm - 120cm (20" - 48")	1104
Panelight Bracket	95cm - 1.8m x 1.2m (38" - 72")	1107

### Skylite

#### Skylite

For the location photographer who needs lighting control in the most demanding situations. The Skylites collapsable but rigid aluminium frame can be used in windy conditions.

#### Skylite Frames/Fabrics

Skylite frames, fabrics and accessories are available separately, so that you can mix and match as you choose. The range of materials includes 'Sunfire' - Lastolite's combination of Gold and Silver, which provides a uniquely warm, soft light, ideal for skin tones.

#### Skylite Kits & Accessories

For greater value choose a Standard or Premium Skylite Kit. The Standard kit contains a Silver/White reflector, 1.25 stops diffuser, frame and bag. The Premium kit offers a choice of Sunfire/White or Silver/White reflector and is ideal if you also require a crossbar handle and/or gripheads.



#### Features

- ▶ The hollow aluminium frame is incredibly light but extremely strong
- ▶ Resistant to rust so ideal for work in the rain
- ▶ There is an elastic cord running through the aluminium, so it's impossible to lose parts or leave anything behind
- ▶ Skylite fabric covers are double-sided and velcro easily into place for an impressively taut finish
- ▶ One bag fits all sizes

#### Specifications

Frames	Code
Skylite Frame Small (1.3kg) 1.1m x 1.1m (3'6" x 3'6")	811
Sylite Frame Medium (2kg) 1.1m x 2m (3'6" x 6'6")	812
Skylite Frame Large (2.3kg) 2m x 2m (6'6" x 6'6")	822

Accessories	Code
Skylite Bag	8444
Skylite Griphead	8446
Skylite Floor Bracket (does not include Griphead)	8447
Skylite Crossbar Handle	8449

Gold / Silver



Black / White / 5600°K



Sunfire / White  
4750°K / 5600°K



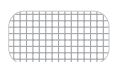
Chromakey Green / Blue



Diffuser 0.75 Stop



Diffuser 1.25 Stop



## Specifications

Skylite Kits	Sunfire/White reflector	Silver/White reflector	1.25 stops diffuser	Frame	Bag	Griphead	Extra Griphead	Crossbar handle	Code
Skylite Small 'Premium' Kit	1		1	1	1	1			81144
Sylite Medium 'Premium' Kit	1		1	1	1	1		1	81244
Skylite Large 'Premium' Kit	1		1	1	1	1	1		82244
Skylite Small 'Premium' Kit		1	1	1	1	1			81144GI
Sylite Medium 'Premium' Kit		1	1	1	1	1		1	81244GI
Skylite Large 'Premium' Kit		1	1	1	1	1	1		82244GI
Skylite 'Standard' Small kit		1	1	1	1				81143
Skylite 'Standard' Medium kit		1	1	1	1				81243
Skylite 'Standard' Large kit		1	1	1	1				82243

Fabrics	Small Fabrics 1.1m x 1.1m (3'6" x 3'6")	Medium Fabrics 1.1m x 2m (3'6" x 6'6")	Large Fabrics 2m x 2m (6'6" x 6'6")
	Code	Code	Code
Black / White	81121	81221	82221
Sunfire / White	81106	81206	82206
Silver / White	81131	81231	82231
Gold / Silver	81134	81234	82234
1.25 Stop Diffuser	81107	81207	82207
0.75 Stop Diffuser	81101	81201	82201



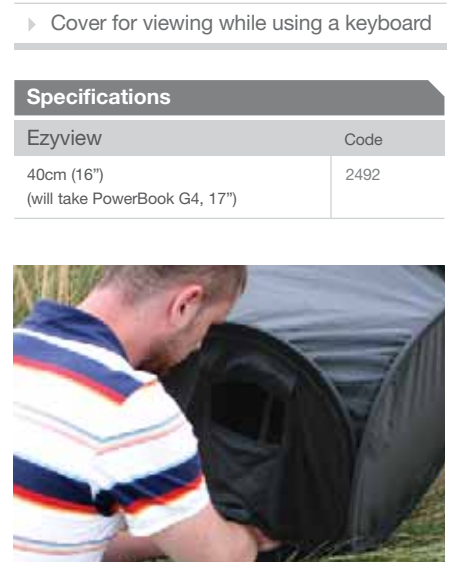
Skylite's special griphead allows it to be fixed to stands and tilted as required. (8446)



Skylite's floor bar (8447) enables the system to stand alone (particularly handy for solo shoots). Must be used with a grip head (8446)

## Ezyview

Ezyview is the ideal solution for any digital photographer who struggles to view their images on a laptop outdoors. The Ezyview eliminates the reflections from your screen and is of course, collapsible so is easy to carry with you.



### Features

- ▶ Collapses to a third of its original size
- ▶ Waterproof fabric and steels
- ▶ Cover for viewing while using a keyboard

### Specifications

Ezyview	Code
40cm (16") (will take PowerBook G4, 17")	2492

## Colour Balance and Exposure Control

With the advent of digital photography not only has exposure and colour balance become more important when taking a photograph, the control and adjustment of these two factors has become much easier. However, having a known accurate reference point to work with either pre or post capture in Adobe Photoshop is essential. This group of products have been developed to help you make these necessary adjustments much easier.

### EzyBalance PATENT PENDING

The EzyBalance 'point and shoot' allows you to concentrate on the important part of photography, composition and 'capturing the moment'. This handy double sided 'pop up' 18% grey/white card simplifies the complex technical issues surrounding exposure and colour correction when working in different lighting conditions. This provides a major benefit when working under pressure at events such as weddings or fashion shows.

A waterproof version is also available for Scuba Divers.



#### Features

- ▶ Colour correction, pre and post capture
- ▶ Exposure control, pre and post capture
- ▶ Accurate colour rendition
- ▶ Collapsible, durable and cleanable
- ▶ Double sided
- ▶ Unique focusing target
- ▶ For use with digital or film photography
- ▶ Patent pending
- ▶ Collapses to a third of its original size

#### Specifications

EzyBalance	
Size	Code
30cm (12")	1250
50cm (20")	2050
75cm (30")	3050

#### Specifications

EzyBalance for Scuba Divers	
Size	Code
30cm (12")	1252

### XpoBalance PATENT PENDING

The XpoBalance works in a similar way to the EzyBalance but has the added advantage of three different grey surfaces on one side and a black, white and 18% grey surface on the other side, collectively offering a range of white balance, exposure, colour correction and bracketing adjustment options.



#### Specifications

XpoBalance	
Size	Code
38cm (15")	1558

### TriBalance PATENT PENDING

The TriBalance is the same shape and size as our popular TriGrip product. Like the XpoBalance this product is incredibly versatile offering a black, white and 18% grey surface on one side and a silver reflective surface on the other.



#### Specifications

TriBalance	
Size	Code
75cm (30")	3658

## White Balancing the Camera

The EzyBalance, XpoBalance and TriBalance all feature a unique focusing target to enable the camera to focus on the card and take the necessary readings for an accurate white balance setting. Many cameras struggle to actually focus on a plain white or grey area.



A poorly exposed and colour balanced image.



Get the model to hold the EzyBalance.



Select the Custom White Balance setting on your camera (refer to your camera manual for instructions).



Zoom in so the EzyBalance fills the whole frame of the camera and take a reading off the card (refer to your camera manual for instructions).



Your White Balance is now set so you can re-take the shot with the correct exposure and colour balance.

## Post Capture - Exposure and Colour Balancing

The EzyBalance, XpoBalance and TriBalance can also be used as an accurate reference point for post capture manipulation in Adobe Photoshop® (and other software packages). All you need to do is take the first shot with the card in the photograph each time you shoot in a different lighting situation.



A poorly exposed and colour balanced image.



Open up into Photoshop the image you took that included the card. Then open up the 'levels' adjustment window.



Select the grey dropper and click on the card. The poor exposure and colour balance is automatically corrected. Save these changes as a 'new action'.



You can then apply the 'new action' to the remainder of the batch from that shoot. All the images are automatically adjusted for you.

## Post Capture - Exposure and Colour Balancing Effects

Due to the multiple surfaces on the XpoBalance and TriBalance, these cards can be used to create some interesting 'instant' effects as well as the features already mentioned above. The TriBalance has the added benefit of a reflective silver surface on the other side so it can also be used as a traditional reflector.

You can select the grey dropper and click on any of the three grey surfaces of the XpoBalance to give a slightly different exposure and colour balance effect.

light grey surface      mid grey surface      dark grey surface

white dropper      grey dropper      black dropper

You can use the black, white and grey dropper to click on their corresponding colour on the Xpobalance or Tribalance to emphasize that particular colour range in the shot.

## Lighting Control

### Lumen8

Lastolite's Lumen8 flash range has been designed to fulfil the needs of the most demanding working photographers. The range has been technically developed to a high level of specification offering reliability, durability and safety on location or in the studio.

The range is further enhanced with an extensive range of accessories which feature the popular S type bayonet fitting.



#### Features

- ▶ Available in 200w and 400w versions
- ▶ Auto dumping for quick light output changes
- ▶ 250w modelling bulbs so you can see clearly how you are working
- ▶ Switchable modelling light proportional or full power
- ▶ Audible ready light
- ▶ Fan cooled



#### Specifications

Lumen8	Code
Lumen8 Flash Head F200	3251
Lumen8 Flash Head F400	3501
Lumen8 Accessories	Code
PVC Umbrella 80cm	3212
Light Stand (Pneumatic)	1159
Reflector standard 18.5cm (7")	3264
Reflector 25cm (10")	3580
Reflector 46cm (18")	3274
Reflector fish frier	3266
Snoot	3288
Sync Cable	3262
Radio Trigger	3265



3212



2460



3580



3262



3263

# Lumen8 Kits

The Lumen8 flash kit is designed for photographers who need to be mobile. The two head kit is supplied in a robust, hard wearing wheeled case, which can also be carried on the shoulder or by hand. The high quality specification continues with the inclusion of one of Lastolite's famous black/white PVC umbrellas and the world renowned Ezybox, the pop-up 60cm x 60cm softbox. And to finish off this ultimate flash kit two wide based, air dampened stands ensure that your lights are supported securely.



## Specifications

Lumen8 Kits	Flash Head 250	Flash Head 500	Reflector 18.5cm (7")	PVC 80cm Umbrella	Light Stand	Ezybox 60x60 softbox	Flash Case	Sync Cable	Code
Lumen8 Flash Kit F200	2		2	1	2	1	1	2	3250
Lumen8 Flash Kit F400		2	2	1	2	1	1	2	3500

### RayD8 c3200

The RayD8 c3200 kit provides an entry-level studio lighting system for product and portrait photography. Using a continuous tungsten light source (3200k), this kit is based on a 'what you see is what you get' approach. The soft white 80cm umbrellas included in the kit ensure the best distribution of the light.



#### Features

- ▶ S type bayonet fitting
- ▶ Removable reflector
- ▶ Wide range of accessories available
- ▶ Ideal for product photography

#### Specifications

RayD8 accessories	Code
Colour corrected 75w Fluorescent bulb	8036
Lighthouse power cable and reflector	3603

#### Specifications

RayD8 c3200 kit	Light Head	Reflector 50 degree	500w P 2/1 Bulb	Light Stand	PVC 80cm Umbrella	Code
RayD8 c3200 kit	2	2	2	2	2	8030

### RayD8 c5000

The RayD8 c5000 kit provides an entry-level studio lighting system for product and portrait photography. Featuring a high output compact fluorescent bulb (equivalent to 300w), this continuous light system offers colour corrected light at 5000k (daylight).

The bulbs are compact fluorescent and run at a low temperature, making them ideal for photographing food, people and other temperature sensitive subjects.



#### Features

- ▶ Cool running
- ▶ High output
- ▶ Colour balanced
- ▶ S type bayonet fitting
- ▶ Removable diffuser cover

#### Specifications

RayD8 c5000 kit	Light Head	Reflector 46cm (18")	75w Bulb Fluorescent	Light Stand	Removable Diffuser	Code
RayD8 c5000 kit	2	2	2	2	2	8035

# Ezybox

How many times have you been on location and wished you had a TRULY portable softbox?

Until now, softboxes have generally been seen as a studio item either because they're too bulky to carry or take too long to assemble. A unique 'speedring' adaptor attaches in less than ten seconds with NO SCREWS, RODS OR FASTENERS of any type! EZYBOX really is "up in a flash".



## Features

- ▶ Folds up just like a Lastolite reflector - the bag is 25cm (10") across (code 2460)
- ▶ Up and working in less than one minute!
- ▶ Very low light loss, only half a stop!
- ▶ Colour balanced



## Specifications

EzyBox	Size	Code
Softbox* Small	45cm x 45cm (18" x 18")	2445
Softbox* Medium	60cm x 60cm (2' x 2')	2460
Outer diffuser **	60cm x 60cm (2' x2')	2461
Softbox* Large	90cm x 90cm (3' x3')	2490
Outer Diffuser**	90cm x 90cm (3' x 3')	2491

\* Includes recessed diffuser  
 \*\* Outer diffuser converts the Softbox from recessed to flat fronted and to give added diffusion.

## Specifications

Speedrings	Code	Speedrings	Code
Bowens / Calumet S type	2351	Propet Mono	2362
Elinchrom	2352	Norman	2363
Balcar / White Lightening / Alien Bees	2353	Electra / Courteney	2387
Profoto	2354	Visatek	2389
Hensel Contra	2356	Bron	2390
Multiblitz compact	2357	Bowens Ltype	2391
Multiblitz Variolux	2358	Photogenic	2392
Comet	2359	Speedatron	2393
Sunstar / Photona	2360	Dynalite	2394
Propet	2361		

### Ezybox Hotshoe

The new 45cm x 45cm Ezybox Hotshoe converts your battery operated tilt head flash gun from a harsh directional light into a soft light, that can then be mounted onto either a light stand or a camera bracket. The Ezybox Hotshoe folds flat in the same way as the other Ezybox models, but does not collapse.



Without Ezybox Hotshoe



With Ezybox Hotshoe

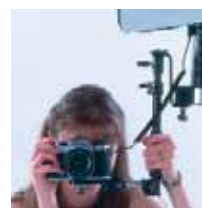


#### Features

- ▶ Softbox for Hotshoe flash
- ▶ Adjustable bracket for different sized flash guns
- ▶ Operates as a Coldshoe
- ▶ Folds flat
- ▶ Assembled in a few minutes
- ▶ Ideal for location use
- ▶ Can be used on a stand or with camera bracket 2408

#### Specifications

EzyBox Hotshoe	Size	Code
Softbox Hotshoe	38cm x 38cm (15" x 15")	2438



2408  
Camera bracket

### Micro Apollo

#### Specifications

Description	Size	Code
Micro Apollo 45*	W: 20cm x H: 13cm (8" x 5.5")	2201
Micro Apollo 60*	W: 25cm x H: 18cm (10" x 7")	2204
Micro Apollo XL** (Extra Large)	W: 41cm x H: 25cm (16" x 10")	2205

\* Suitable for shoe mounted and hammerhead battery flash.

\*\* Suitable for hammerhead flash guns and not for shoe mounted flash guns

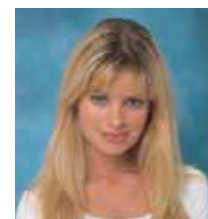


#### Features

- ▶ The hot-shoe flash softbox
- ▶ Folds flat into a camera bag
- ▶ Fits all makes of flash via velcro fasteners



Without Softbox



With Softbox

# Triflector MkII

The Triflector is widely used in makeovers and fashion shots because the subject is given the Triflector's distinctive 'catch lights' to the eyes. The hinge mechanisms make all three panels individually adjustable to get light exactly where you need it. The panels each fold like our collapsible reflecting panels; the frame folds away and they all fit into a portable bag. Triflector MkII weighs only 1.2kg.



Without Triflector



With Triflector

## Features

- ▶ Unique quality of light
- ▶ Overlight by up to 3 stops on negative film for 'porcelaine skin' effect
- ▶ Weighs just over 1kg

## Specifications

Triflector MkII Panels	Code
Triflector Mk II - Sunfire/Silver	2933
Triflector Mk II - Silver/ White	2933SW
Set of three Gold/ White panels	2905
Set of three Translucent panels	2909
Set of three Silver / White panels	2903
Triflector MkII Kit	Code
Triflector Mk II with 2933 panels & stand kit	2933SP

Sunfire / Silver



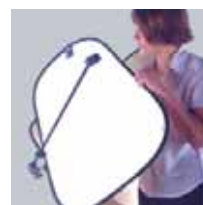
Silver / White



Gold / White



Translucent Fabric reduces light by 1.2 stop



### Umbrellas

Lastolite features a wide range of umbrellas from the essentials to reversible, dual-duty and jumbo.

#### Reversibles



4536



4534



4531

4536 Sunfire/Silver: 4750/5600K, 0.5/-1.3f, 1m, (40")  
Two highly efficient surfaces, the subtle mixture of silver on gold from Sunfire gives pleasing skin tones and the Silver offers a crisp light.

4534 Silver/Gold:  
5600K/3800K, -0.6/-1.2f, 1m, (40") Crisp silver backed with warm gold.

4531 Silver/White:  
5600K, -0.5/-0.9f, 1m, (40") Crisp silver backed with soft white.

#### Features

- ▶ Reversibles - Simply take off the fabric cover and turn it over
- ▶ Dual Duty - shoot through or bounce (ie White backed by Silver)
- ▶ All In One - Silver or translucent, shoot through or bounce
- ▶ Jumbo Umbrellas - provide progressively larger light sources, giving softer and more wrap around lighting for video, cinema and photographic lighting

#### Dual - Duty



3221



3223/4523

3221 Dual Duty –  
Black/White Compact:  
5600/5450K, -1.3f, 80cm (34")  
Bounce or colour neutral shoot-through

3223/4523 Dual - Black/Silver/White:  
5600/5450K a translucent white fabric backed with silver fabric for total control and more specular light.

4537 All in One:  
5600/5450K the All In One umbrella can be silver or white bounce, both, or shoot through.

#### Specifications

Size	Light loss	Code
80cm (34")	S/W bounce -0.3f	3223
1m (40")	shoot through -0.6f	4523
1m (40")	shoot through -0.6f S/W bounce -0.2f White bounce -0.1f Silver bounce -0.2f	4537

## Essential Umbrellas



3207/4507



3203/4503

### Specifications

White Translucent - Size	5450K Light Loss	Code
80cm (34")	-0.9f	3207
1m (40")	-0.7f	4507
Silver 5600K - Size	Light Loss	Code
80cm (34")	-0.18f	3203
1m (40")	-0.2f	4503

## Jumbo Umbrellas



### Specifications

White reflective 5600K - Size	Light loss	Code
1.5m (60")*	-0.8f	5821
2m (80")*	-0.8f	7921

\* All Jumbo Umbrellas come complete with a clamp and sandbag

## Umbrella Box

The Umbrella Box is incredibly simple to assemble, fit and use. Its unique lighting effect is achieved by first bouncing the light off the back of the Umbrella Box and then diffusing it through the coated diffuser panel. Simply insert the flash-head reflector into the Umbrella Box and close the zipped openings for a quick set up.



### Features

- ▶ Quick to set up - location or studio
- ▶ Universal fitting onto any light
- ▶ Lightweight and compact
- ▶ The 1.5m (60"), 2m (80"), and 3.75m (150") are all supplied with clamps or tilt

### Specifications

Umbrella Box	Code
8mm shaft 1m (40")	3226
7mm shaft 1m (40")	3227
Umbrella Box & Boom Clamp	Code
1.5m (60")	5826
2m (80")	7926
Umbrella Box & Tilt	Code
3.75m (150")	8926

## Lighting Control

### Cubelite™

The Cubelite™ allows the photographer to control the lighting of products, minimizing shadows and isolating the subject from the background.

It's never been easier to take quick and crisp product shots on location or in the studio. The Cubelite™ has been enhanced in a number of ways so as to improve its utility:

- Background clips mounted in the roof for additional height.
- Open base for even floor surface, easier to fold, and enables positioning of cube over immovable items e.g. plants
- Front opens to edge of Cubelite™ for wider viewing angles.
- One new size - 45cm x 45cm (18" x 18")

The Cubelite™ offers a true location studio which instantly pops open ready for work.

#### Features

- ▶ Ideal for product shots
- ▶ Shadowless lighting
- ▶ Perfect for digital or film use
- ▶ Isolates subject
- ▶ Collapses to a third of its original size



#### Specifications

Cubelite™	Size	Code
Cubelite™	45cm (18")	1886
Cubelite™	58cm (2')	2486
Cubelite™	90cm (3')	3686
Cubelite™ with removable back	90cm (3')	3687
Cubelite™	120cm (4')	4886
Cubelite™	1.5m x 1.5m x 2.1m (5' x 5' x 7')	5287
Cubelite™	2m x 2m x 2.1m (6'6" x 6'6" x 7')	6687

## Cubelite™ Kits

The Cubelite™ Kit contains everything you need to take professional photographs with controlled shadows - just add your digital camera! The Cubelite™ kit now includes a lighting guide by Michael Freeman.



### Features

- ▶ Kits have all you need to take professional product photographs
- ▶ Just add your digital camera!
- ▶ Available in 5 different sizes

### Specifications

Cubelite™ Kit	Cubelite™	Light stand	Tungsten Light	500w Bulb	Silver / White Reflector	White Vinyl Background	White Background Paper (11m roll)	lighting guide	Code
58cm (2') Kit	1	1	1	1	1	1	-	1	3611
90cm (3') Kit	1	1	1	1	1	1	-	1	3601
90cm (3') Kit with removable back	1	1	1	1	1	1	-	1	3612
120cm (4') Kit	1	1	1	1	1	1	-	1	3613
1.5m x 1.5m x 2.1m (5' x 5' x 7') Kit	1	4	4	4	-	-	1	1	3615
2m x 2m x 2.1m (6'6" x 6'6" x 7') Kit	1	4	4	4	-	-	1	1	3614

## Cubelite™ Travel Kits

A compact product photography studio, that fits into a handy instrument style case, making it ideal for location work anywhere in the world.



### Features

- ▶ Kit weighs 9kg (3621) or 10kg (3625)
- ▶ Strong lockage instrument case (check in when travelling by air)
- ▶ Foam interior to prevent damage in transit
- ▶ Multi voltage

### Specifications

Cubelite™ Travel Kit Accessories	Code
E27 to g6.3 adaptor	3589
330w 240v two pin bulb	3587
330w 110v two pin bulb	3588

### Specifications

Cubelite™ Travel Kit	Cubelite™	Light stand & Riser	Tungsten Light	330w Bulb	Silver/White reflector	Tabletop Tripod	White Background	Travel Case	Code
58cm (2') Travel Kit	1	1	1	1	1	1	1	1	3621
90cm (3') Travel Kit	1	1	1	1	1	1	1	1	3625

### Cubelite™ Light Table PATENT PENDING

This illuminated table transforms the standard Cubelite™ into an even more versatile solution for product photography. Simply place the Cubelite™ on top of the light table and position an additional light source underneath it to create an illuminated base for the Cubelite™. This illuminated base virtually eliminates any potential shadows that may appear underneath the product being photographed. It's the perfect solution for creating shadow less and instant 'cut out' images. The light underneath the light table can be pointed downwards for a diffused even effect or upwards to create graduated backgrounds and other effects.

#### Features

- ▶ Available in two sizes
- ▶ Folds flat
- ▶ Includes an acrylic top surface for heavier items up to 8kg
- ▶ Includes a translucent background film to create an infinity curve



#### Specifications

	Size	Code
Cubelite™ Light Table	70cm x 70cm x 90cm (28" x 28" x 35")	8826
Cubelite™ Light Table	100cm x 100cm x 90cm (39" x 39" x 35")	8838
Cubelite™ Light Table Accessories		Code
Carry case for the 8826		1594
Carry case for the 8838		1596

#### Specifications

Cubelite™ Light Table kit	Cubelite™ Light Table	Tungsten Light	500w Bulb	Reflector For Light	Backlight Light Stand	Code
Cubelite™ Light Table kit 70cm (27")	1	1	1	1	1	8827
Cubelite™ Light Table kit 100cm (39")	1	1	1	1	1	8839

# LiteTable PATENT PENDING

The Lastolite still life table "LiteTable" will revolutionize your product photography with its ease of use and light control. It can be assembled in minutes (without the use of any screws, bolts or allen keys!) and folds flat into a handy carry case when not in use, making it ideal for occasional use and location work. The unique patented design allows the photographer to control the light distribution underneath the table by positioning the light in different ways, creating graduated backgrounds or a completely even tone. With gels the creative possibilities are endless. Many of these techniques have previously been difficult with conventional light tables as they have open sides underneath.



## Features

- ▶ Available in two sizes
- ▶ Folds flat
- ▶ Includes an acrylic top surface for heavier items up to 8kg
- ▶ Includes a translucent background Film to create an infinity curve



With illumined LiteTable base



Without illumined LiteTable base

## Specifications

	Size	Code
LiteTable	70cm x 70cm x 150cm (28" x 28" x 60")	7824
LiteTable	100cm x 100cm x 180cm (39" x 39" x 72")	7836
LiteTable Accessories		Code
Carry case for the 7824		1594
Carry case for the 7836		1596

### Studio Cubelite™

The Studio Cubelite™ is the ultimate solution for product photography and takes our highly successful Cubelite™ concept even further. It allows for control of the light from below and all other directions allowing the photographer to give products that floating look with no shadows if desired. The tensioned diffuser fabric means the reflections on even the most reflective surface are kept to an absolute minimum, whilst the generous front opening can be closed to mask reflections from the camera/operator as well. The patented design also allows you to control the light from underneath by pointing the source up or down into the base unit giving different light distribution effects and creating graduated backgrounds if required.



#### Features

- ▶ 360 degree lighting
- ▶ Full shadow control
- ▶ Reflection control
- ▶ Collapses flat in minutes with simple tensioning rods
- ▶ Features a unique base diffusion system
- ▶ Includes a diffused film to create the translucent background
- ▶ Includes an acrylic top surface for heavier items up to 8kg



Specifications		
Cubelite™ Studio	Size	Code
Cubelite™ Studio	70cm x 70cm x 155cm (28" x 28" x 61")	8824
Cubelite™ Studio	100cm x 100cm x 185cm (39" x 39" x 73")	8836

Specifications	
Cubelite™ Studio Accessories	Code
Replacement translucent film for the 8824	8831
Replacement translucent film for the 8836	8834
Carry case for the 8824	1594
Carry case for the 8836	1596

Specifications								
Cubelite™ Studio kit	Cubelite™ Studio	Tungsten Light	500w Bulb	Reflector For Light	Light Stand	Backlight Light Stand	Soft Box	Code
70cm (28") Cubelite™ Studio Kit	1	2	2	2	1	1	1	8825
100cm (39") Cubelite™ Studio Kit	1	2	2	2	1	1	1	8837

# ePhotomaker



The ePhotomaker has been designed for eBay and other online auction users looking to improve their photos on the web.

Having well-lit photos that are an accurate colour can make the difference between selling or not selling a product. The ePhotomaker does this by putting a diffusing fabric on one side of the product to soften the light and a reflector to fill in the shadows on the other side. All you need to provide is an ordinary domestic light.

The ePhotomaker kit includes an EzyBalance grey card to control colours and exposure resulting in photographs with crisp white backgrounds that can be dropped straight onto a web page. The kit also includes a tabletop tripod which ensures that the photos are not blurred due to camera shake.

# Light Tents

On location or in the studio, Light Tents provide soft, shadowless light and are an excellent method of isolating a subject from its environment.



## Features

- ▶ Ideal for anyone selling products using the web
- ▶ Supplied with a blue gel to simulate daylight lighting conditions
- ▶ Collapsible - easy to store
- ▶ Built in reflector on one side, diffuser on the other side
- ▶ Kit contains ePhotomaker, EzyBalance, Blue daylight gel, clips and Tripod

## Specifications

EzyBalance	Code
ePhotomaker Small Kit	2484
ePhotomaker Large Kit	3684

ePhotomaker kit contains:

- ePhotomaker
- EzyBalance 'Point and Shoot' (grey surface only)
- Table top tripod
- Blue daylight gel with clips

## Features

- ▶ Four Sizes
- ▶ Portable
- ▶ Lightweight
- ▶ Collapses to a third of its original size
- ▶ Access from any angle

## Specifications

Description	Size	Code
Light Tent	D: 50cm x H: 60cm (19.5" x 23.5")	2087
Light Tent	D: 75cm x H: 94cm (29" x 37")	3087
Light Tent	D: 95cm x H: 122cm (37.25" x 48")	3887
Light tent	D: 152cm x H: 122cm (60" x 48")	6087

### Dyed Background Swatches

The washable pallet of colours is available in a number of different formats:

- Sheet/Curtain (muslin) 3m x 3.5 m (10' x 12') or 3m x 7m (10' x 24')
- Collapsible reversible 1.5m x 1.8m (5' x 6')
- Collapsible reversibles with train 1.8m x 2.1m x 1.5m (6' x 7' x 5')



51 Ohio\*



48 Maine



49 Colorado\*



46 Florida



50 Wyoming\*



53 Mississippi



41 Dakota\*



40 Washington\*



55 New York\*



54 Arizona\*



42 Kentucky



43 Virginia\*

\* Re-blended for a subtler less contrasting finish.

# Dyed Curtain/Muslin Backgrounds

Especially useful for kids, pets and sports - this extensive range of curtain backgrounds gives photographers the colours and patterns to express their creativity.

The backgrounds can be draped over props or bunched for added texture. They are all 3m (10') wide and come with a handy tote bag. They have a hem along the shortest edge to insert a pole for support.

## Washables

Fully machine washable at 40°C (105°F) in a large washing machine, these backgrounds are for photographers who use backgrounds extensively. The colours take their inspiration from American States.



## Features

- ▶ This range is available in 3m x 3.5m (10' x 12') and 3m x 7m (10' x 24')
- ▶ Especially designed for use with kids, pets and sports
- ▶ Support systems available
- ▶ Extensive colour range



## Specifications

Curtain/Muslin Backgrounds	Size: 3m x 3.5m (10' x 12') Code	Size: 3m x 7m (10' x 24') Code
Washington	7740	7840
Dakota	7741	7841
Kentucky	7742	7842
Virginia	7743	7843
Florida	7746	7846
Maine	7748	7848
Colorado	7749	7849
Wyoming	7750	7850
Ohio	7751	7851
Mississippi	7753	7853
Arizona	7754	7854
New York	7755	7855

### Dyed Collapsible Reversible Backgrounds

This extensive range of collapsible backgrounds gives photographers the colours and patterns to express their creativity.

The 1.8m x 2.15m (6' x 7') backgrounds with train have been modified and now use Lastolite's knitted 'crease resistant' fabrics (currently used on our 5"x6" backgrounds) making it even easier to work with our full length collapsible backgrounds.

#### Features

- ▶ Crease resistant fabric
- ▶ The ultimate location accessory
- ▶ Collapses to a third of its original size
- ▶ Ideal for portraits on location or in the studio
- ▶ Can be used for solo portraits or smaller groups
- ▶ Zip up bag
- ▶ Reversible
- ▶ Combine with Lastolite's background support system (1108) on page 33



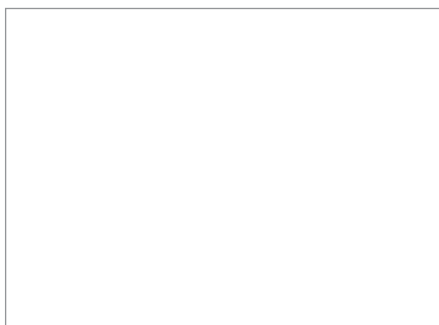
#### Specifications

Collapsible Reversible Backgrounds	1.5m x 1.8m (5' x 6') Code	1.8m x 2.15m (6' x 7') Code with extra ,1.5m (5') train
Florida / Maine	56FM	67FM
Washington / Dakota	56WD	67WD
Wyoming / Mississippi	56WU	67WU
Virginia / Kentucky	56VK	67VK
New York / Ohio	56NO	67NO
Arizona / Colorado	56CA	67CA

## Plain Background Swatches



Black



White

## Plain Collapsible Knitted Backgrounds

A compact range of popular reversible colours (except 5620) all made from crease resistant fabrics dyed a single colour for passport, ID, and other uses.



### Features

- ▶ Crease resistant
- ▶ Single colours
- ▶ Reversible
- ▶ Collapsible
- ▶ Ideal for passport, ID and corporate photos



### Specifications

Collapsible Single Colours	Size	Code
Black / White	1.5 x 1.8m (5' x 6')	5621
White	1.5 x 1.8m (5' x 6')	5620
Black / White	1.8 x 2.15m (6' x 7')	5921
Black / White	1.8 x 2.75m (6' x 9')	6921
Black / White with train	1.8 x 2.15m (6' x 7')	6701

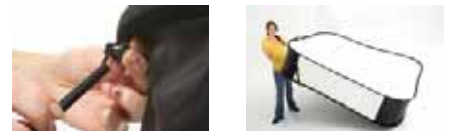
## Backgrounds

### HiLite Backgrounds PATENT PENDING

The HiLite backgrounds range allows the photographer to work in a way that was extremely difficult to achieve in the past, 'High Key' photography on location and in restrictive spaces. By rear lighting the white background itself there is no longer a need to use a background light behind the subject. Furthermore, because the background is actually illuminated it means the subject can stand virtually right in front of it without casting a shadow. The HiLite backgrounds also works as a large rear softbox and illuminates the subject as well, meaning you can use just one other flash head to light the subject from the front. What's more, the whole thing is collapsible.

#### Features

- ▶ Available in two sizes 1.5m x 2.15m (5' x 7') and 1.8m x 2.15m (6' x 7')
- ▶ Can be rotated and used on its short or long edge
- ▶ An optional 'wipe clean' vinyl train is also available that attaches to either edge for full length work
- ▶ Can be suspended on our 1108 background support system
- ▶ Can even be used as a very large softbox
- ▶ Free standing



#### Specifications

Cleanable vinyl train for	Code
HiLite Background 1.5m x 2.15m (5' x 7')	8857
HiLite Background 1.8m x 2.15m (6' x 7')	8867
Cleanable Vinyl Train for the 1.5m x 2.15m (5' x 7') HiLite background	8858
Cleanable Vinyl Train for the 1.8m x 2.15m (6' x 7') HiLite background	8868

# Superwhite Vinyl Backgrounds

Lastolite's 'wipe clean' Superwhite vinyl background can literally be used over and over again. Simply wipe away any dirt or footprints at the end of your shoot, then roll it back up ready for next time! It couldn't be easier. Supplied on a roll the same width as our standard paper backgrounds (2.75m) the Superwhite vinyl can easily be suspended using our 1108 background support system.



## Features

- ▶ Wipe clean
- ▶ Long lasting
- ▶ Ideal for 'High Key' photography
- ▶ Same width as Lastolite's paper rolls

## Specifications

Description	Size	Code
Superwhite Vinyl Background	2.75m x 6m	7761



## Backgrounds

### Paper Roll Backgrounds



9001/9101/9201 Super White



9002 Heaven



9004 Corn



9005 Navy



9006 Wine



9008 Red



9012 Arctic Grey



9013 Nugget



9016 Conker



9020/9120/9220 Black



9024 Marigold



9025 Sandstone



9026 Flint



9027 / 9127 Shadow Grey



9029 Amethyst



9030 Ocean



9031 Kingfisher



9035 Green Grass



9037 Gala Pink



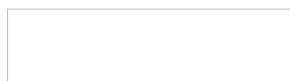
9038 Primrose



9046 Leaf Green



Aztec 9047



9050 White



9051 Ivory



9054 Graphite



9058 Royal



9059 Dove Grey



9060 Pewter



9062 Purple



9065 Regal Blue



9071 Yellow



9073 Chromakey Green

#### Features

- ▶ Support systems available
- ▶ Available in 3 sizes
- ▶ Comprehensive range of colours
- ▶ Totally crease free
- ▶ Disposable if marked
- ▶ Cut your own custom lengths

#### Specifications

Paper Roll Backgrounds	
Size: 2.75m x 11m (9' x 35')	Code
Super White	9001
Heaven	9002
Corn	9004
Navy	9005
Wine	9006
Red	9008
Arctic Grey	9012
Nugget	9013
Conker	9016
Black	9020
Marigold	9024
Sandstone	9025
Flint	9026
Shadow Grey	9027
Amethyst	9029
Ocean	9030
Kingfisher	9031
Green Grass	9035
Gala Pink	9037
Primrose	9038
Leaf Green	9046
Aztec	9047
White	9050
Ivory	9051
Graphite	9054
Royal	9058
Dove Grey	9059
Pewter	9060
Purple	9062
Regal Blue	9065
Yellow	9071
Chromakey Green	9073
Size: 1.37m x 11m (41/2' x 35')	Code
Super White	9101
Black	9120
Shadow Grey	9127
Size: 3.56m x 30m (111/2' x 100')	Code
Super White	9201
Black	9220

# Chromakey Collapsible Reversibles

Chromakey has been used in film and cinema production as a tool to mix two or more images together in all aspects of the art. It is increasingly used in digital photography to cut and paste a subject onto a background.



## Features

- ▶ Reversible
- ▶ Chromakey rim tape as standard
- ▶ Crease resistant fabric
- ▶ Fast to set up and dismantle
- ▶ For inside and outside use
- ▶ Collapses to a third of its original size
- ▶ Certified fire proof fabric

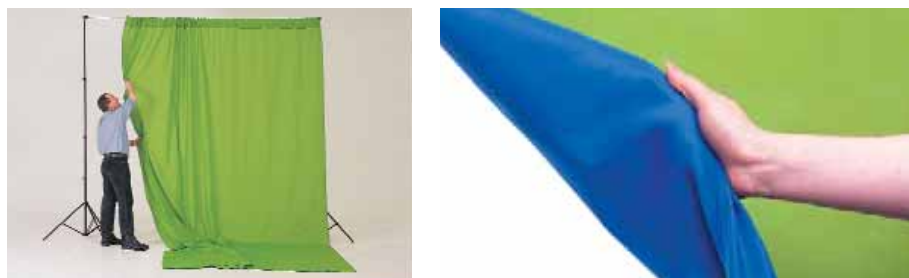
## Specifications

Chromakey Collapsible Background	Size	Code
Chromakey Blue/ Green Reversible	150cm x 180cm (5' x 6')	5687
	180cm x 210cm (6' x 7')	5987
Black/White Reversible	150cm x 180cm (5' x 6')	5621
	180cm x 215cm (6' x 7')	5921
	180cm x 275cm (6' x 9')	6921
Green Chromakey	180cm x 210cm (6' x 7')	5981
	180cm x 275cm (6' x 9')	6981
Blue Chromakey	180cm x 210cm (6' x 7')	5988
	180cm x 275cm (6' x 9')	6988



# Chromakey Curtain / Muslin Backgrounds

Lastolite's Chromakey Curtains are available in two sizes, 3m x 3.5m (10' x 12'') and 3m x 7m (10' x 24''). Choose from Blue, Green or reversible Blue/Green versions. For most effective use, mount with Lastolite's background support system, (see page 33).



## Specifications

Chromakey Curtains	Size	Code
Green	3 x 3.5m (10' x 12')	5781
	3 x 7m (10' x 24')	5881
Blue	3 x 3.5m (10' x 12')	5788
	3 x 7m (10' x 24')	5888
Reversible Blue / Green	3 x 3.5m (10' x 12')	5787
	3 x 7m (10' x 24')	5887

## Supports & Props

### Background Support Systems

These devices are all available to support various Lastolite backgrounds:

- The 1108 and 1150 support curtain backgrounds, the Superwhite vinyl and paper rolls.
- The 1109 is designed for collapsible backgrounds. The 1.8m x 2.75m (6' x 9') Chromakey background cannot be supported by this system.



1108  
Background Support System (for 3m/10' widths).



1150  
Wide Width Support System (comes with third stand and adaptor for 6m/20' widths).



1119  
3m Telescopic cross bar.

### Props

#### Posing Tubs (8014)

A set of removable/washable white covers are also available - 8015



#### Features

- ▶ Variety of sizes
- ▶ Nestable 'Russian Doll' style for easy storage
- ▶ Hard wearing nylon covers with padded seats

#### Baby Poser (8017)



#### Features

- ▶ Multi-position
- ▶ A modular system which can be constructed into a variety of shapes
- ▶ Supplied with interchangeable grey cover

#### Tilt Heads



2403  
Tilt head with flash shoe.



2405  
Tilt head with Quick Release Metz Bracket.



2408  
Camera bracket



# Distributor List

COUNTRY	COMPANY	TELEPHONE NUMBER	WEB SITE
Argentina	Bey Corporation SRL	01147711895	www.bey.com.ar
Australia	Kayell Australia Pty Ltd	0294399377	www.kayellaustralia.com.au
Austria	Teufel GmbH	062292403	www.teufel.at
Belgium	Servix & Partners	038877720	www.servix.be
Canada	Vistek, Toronto, Ontario / Vistek, Calgary, AB	4163651777 / 4032440777	www.vistek.ca
Croatia	Prizma	13895127	www.prizma-foto.hr
Cyprus	F.C Trading Co. Ltd	22670806	www.foto-cine.com
Czech Republic	Light Q	224253079	www.lightq.ca
Denmark	OBT - Photoinvest	38797562	www.obt.dk
Estonia	Olympus Estonia OU	3726549541	www.olympus.ee
Finland	Color Kolmio OY	0207530359	www.colorkolmio.fi
France	MMF-Pro	0148912066	www.mmf-pro.com
Germany	B.I.G Brenner Import & GroBhandels GmbH	096161414	www.alles-big.de / www.lastolite.de
Greece	H. Alexandrou & Co.	2107236847	
Hong Kong	Shriro (H.K) Ltd	25245031	www.shriro.com.hk
Hungary	Studio Line Fototech Nika	0612224200	www.nika.hu
Iceland	Beco	5333411	
Iraq	Future Art Co Broadcasting Trading Ltd	18188959	www.futureart-bt.com
Ireland	Data Micrographics Ltd	014781888	www.dml.ie
Israel	Zandberg Ltd	036292321	www.photozand.com
Italy	Bogen Imaging, Italy	025660991	www.bogenimaging.it
Japan	Gin Ichi Corporation	0355505036	www.ginichi.com
Jordan	Ibrahim Ishaq Safadi & Partner	065678211	www.camerahouse-jo.com
Kuwait	Ashraf & Co. Ltd	965805151	www.ashraf.com
Lebanon	Gulbenk Corporation	04723777	
Luxembourg	Lecuit Opto-Technical S.A.	495607	www.lecuit.lu
Malaysia	Shriro Snd Bhd	78749842	
Malta	The Foto Grafer	21661380	www.thefotografer.net
Mexico	Foto Regis	5550615100	www.fotoregis.com
Netherlands	Transcontinenta BV	0252687555	www.transcontinenta.nl
New Zealand	Apix Photographic Supplies	93073177	www.apix.co.nz
Norway	Lars Farnes	22901350	www.farnes.no
Peru	Wilhemi Monge	012414493	www.wmfoto.com
Poland	Foto 7	323313704	www.foto7.com.pl
Portugal	Cromalite SL	934360561	www.cromalite.com
Romania	Imatech	0213126892	
Russia	Marco	80959160050 / 80959160010	www.marco-pro.ru
Saudi Arabia	National Services Company	038428849	
Serbia	Pro Light d.o.o.	011774704	
Singapore	Ruby Photo Co. Pte Ltd	62546582	www.rubyphoto.com.sg
Slovak Republic	Moonlight Spol s.r.o	0759296004	
Slovenia	Cumulus d.o.o.	38642016533	www.cumulus.si
Spain	Cromalite SL	934360561	www.cromalite.com
Sweden	Aifo AB	087200645	www.aifo.se
Switzerland	Tekno AB	0444911314	www.tekno.ch
Taiwan	Cheng Seng Trading Co	0223311191	www.chengseng.com.tw
Turkey	Zoom Ithalat	02125114640	www.zoomithalat.com
UAE	Salam Studio & Stores	043245252	
UK	JP Distribution	01782753300	www.johnsons-photopia.co.uk
USA	Bogen Imaging Corporation	12018189500	www.bogenimaging.us

## Video Dealers

Australia	DB Audio Visual Pty Ltd	61398193630	www.dbav.com.au
Belgium	ES Video Facilities	3216404020	
Holland	Vocas BV	31356233707	
Malaysia	AFS Engineering m snd bhd	60380758990	
Russia	DNK Corporation	74952323828	
Syria	Ghali Electronics	963113335451	

## Lastolite Limited

1 - 2 Vulcan Court, Hermitage Industrial Estate, Coalville, Leics. UK LE67 3FW

e: sales@lastolite.com

www.lastolite.com